

MICROTRENZADA®

Trenza Metal aluminium

Modular applications. Technical catalogue



TRENZA METAL

aluminium

PRESENTATION

APPLICATIONS

MICROTRENZADA® MODULAR FENCES

- **Horizontal weave** 10
Characteristics of the system
- **Vertical weave** 16
Characteristics of the system

MICROTRENZADA® ENCLOSURES AND CLOSINGS

- **Horizontal weave** 22
Characteristics of the system

MICROTRENZADA® CLOSINGS / BATTENS

- **Hanging system** 28
- **Cassette system** 30

BASIC PRODUCT

- **Without rods** 32
- **With rods** 32

PROCEDURE AND SUPPLY

FINISHES

OTHER TRENZA METAL ÁREA PRODUCTS

*All the products included in this catalogue are protected by the EUROPEAN PATENT N° 09382088.4.

MICROTRENZADA®

Trenza Metal

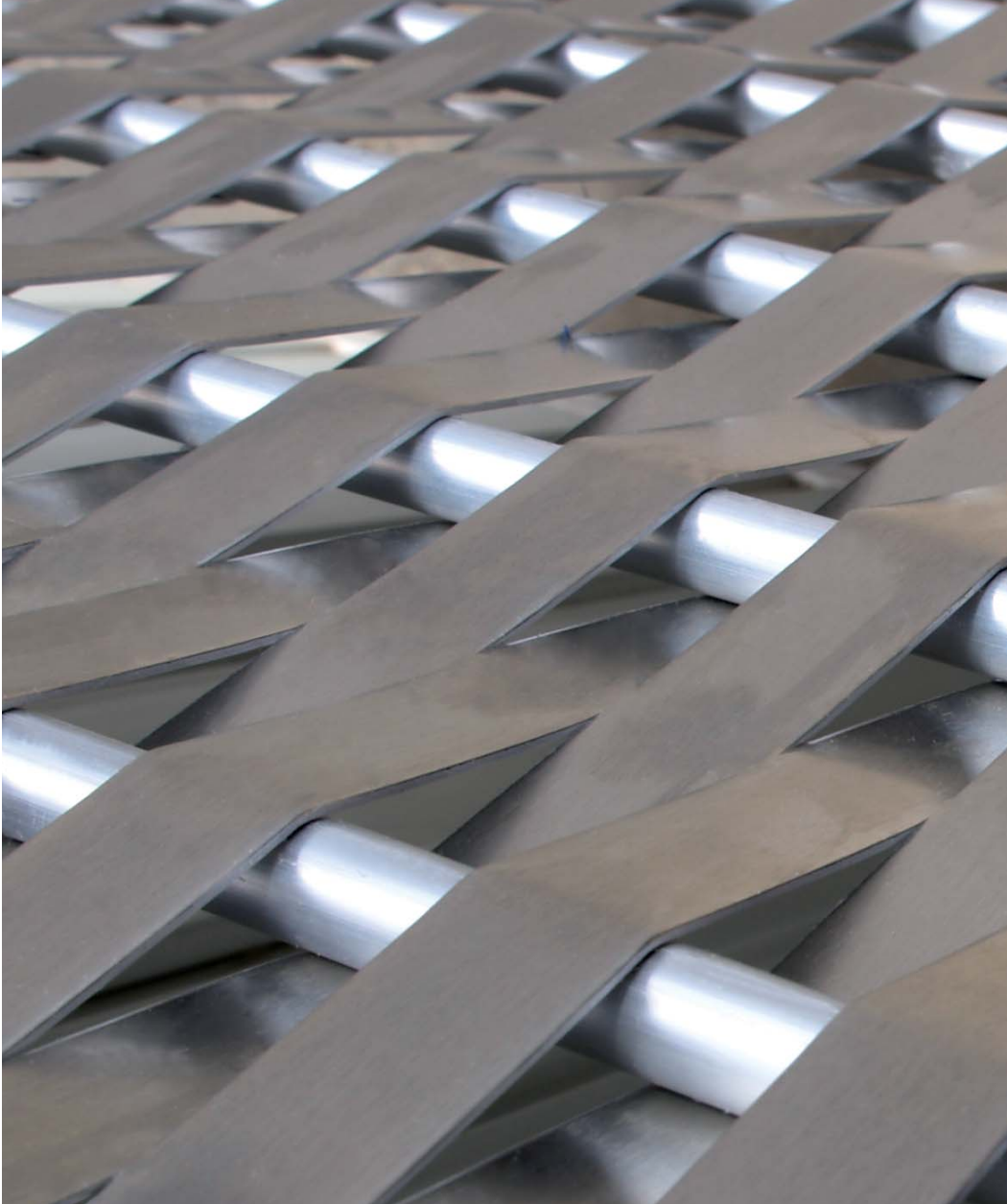
aluminium

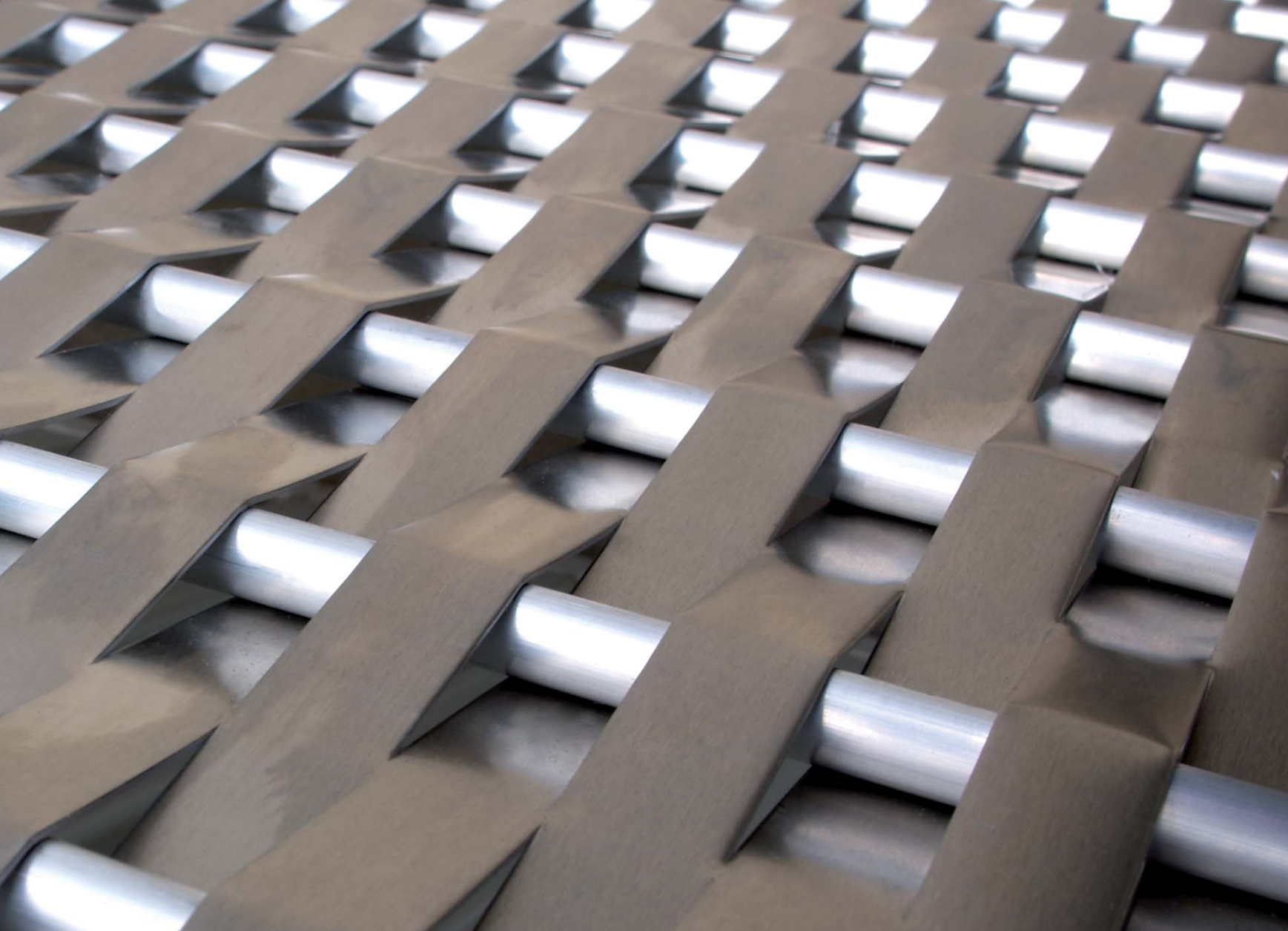
**A different metallic fabric to offer
the architecture more expressive
resources**

High concealing
Light, 5,3 kg/m² approx.
Air permeability

Applications:

Façade coating
Concealing fronts
Holes closing
Railings, fences, rails...





MICROTRENZADA® Trenza Metal aluminio

A fabric with own patent which has the singular **characteristics of the aluminium, corrosion resistance, lightness and flexibility** and the aesthetic values and the quality the Trenza Metal products are famous for.

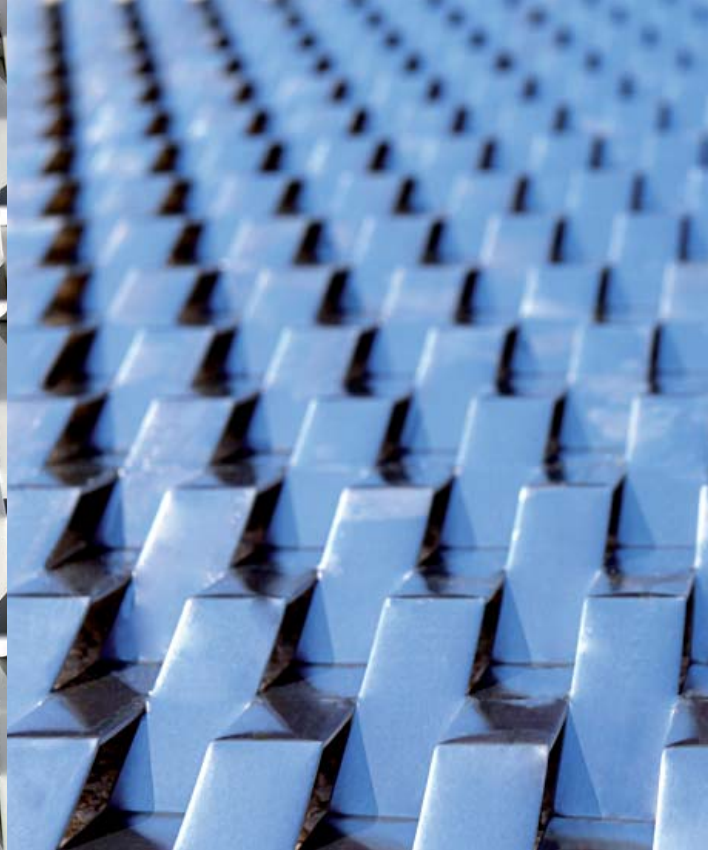
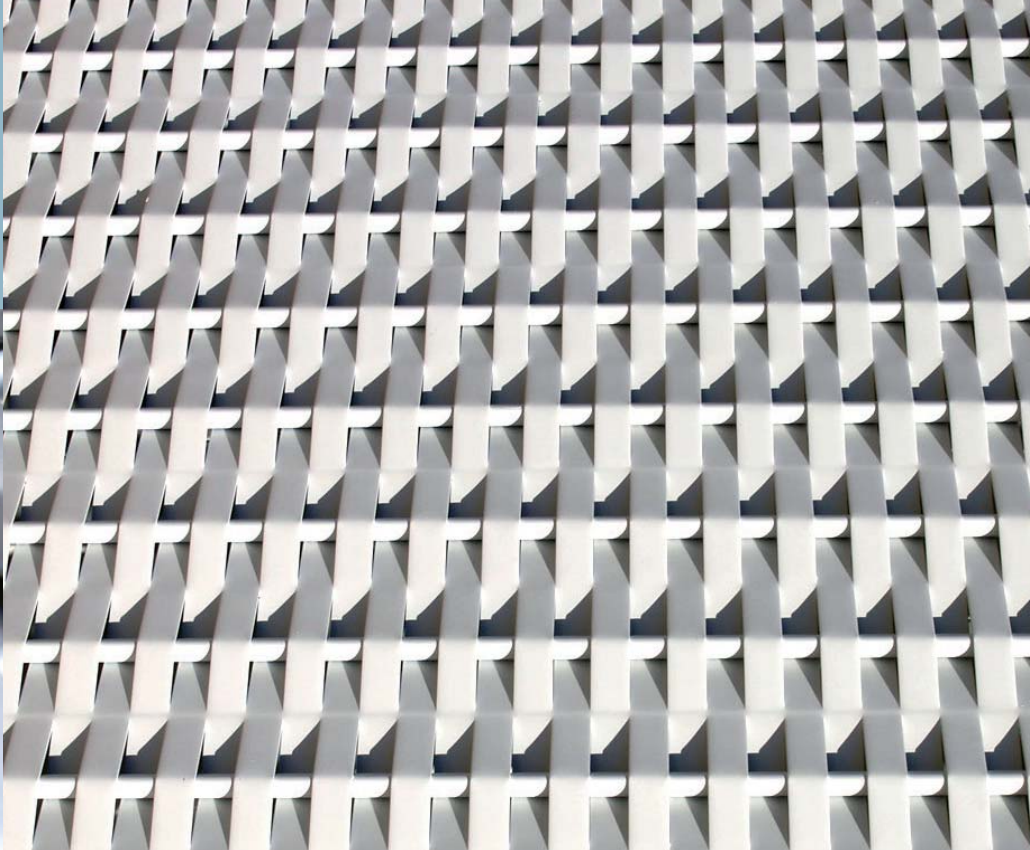
MICROTRENZADA®. Trenza Metal aluminium

Trenza Metal aluminium has developed a wide range of fabrics manufactured **with its own technology and patent**.



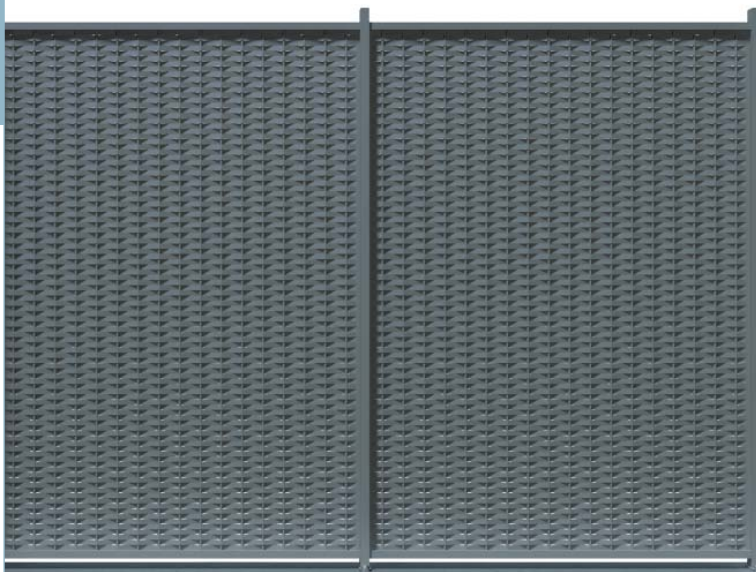
The **MICROTRENZADA®** aluminium sheets are supplied to locksmiths and to companies which transform them into lacquered or raw panels.

Trenza Metal aluminium offers also a high quality finished products range, famous for their **easy technical procedure, supply and assembly**.



A new kind of metallic framework, in aluminium.

Trenza Metal aluminium offers the professionals a wide range of technical solutions, assembly and fixing systems which make it possible to increase the viability of the integration into the building works.

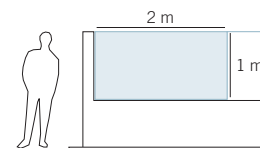


HORIZONTAL WEAVE

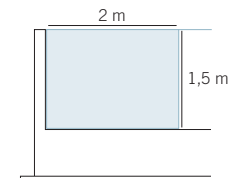


PANEL STANDARD FORMATS

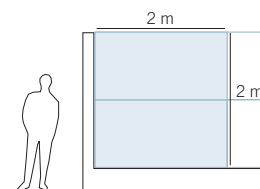
Ref.: MTR-H100



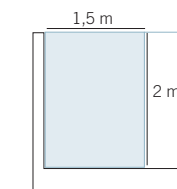
Ref.: MTR-H150



Ref.: MTR-2H100



Ref.: MTR-H200



· Other **formats, bending** and **installation** positions, ask.

POSTS

1. Galvanized iron

- Stitch and junction
- Wall anchorages
- Inside and outside corners

2. Aluminium

- Stitch and junction
- Esquinas

ANCHORAGES

1. Chemical plug

2. Metallic plug

3. Receive

*More information about the Characteristics of the system (page 14)





Maier Technology Centre, Gemika (Vizcaya).



Parque infantil (Brescia), Italia. Ref. MTR-H100

Steel surface protection

Surface protection.
Duplex system according to the norm UNE-En 134383.
Hot galvanizing >70 µm thick.
Norm UNE-EN ISO 1461.
Acid degreasing, amorphous phosphatising
Oven baked polyester lacquering >70 µm thick.
High quality.

Panel stiffener metal strip
Oven baked lacquered and zinc 50x4 mm steel strip
which provides more resistance to the stretch.

Stretch

MICROTRENZADA® aluminium
sheet alloy 30-H111, thickness 1.5 mm.
Alloy aluminium rods 6063 T5, ø12 mm.

Aluminium surface protection

Phosphatising and degreasing treatment.
Oven baked lacquering with polyester.

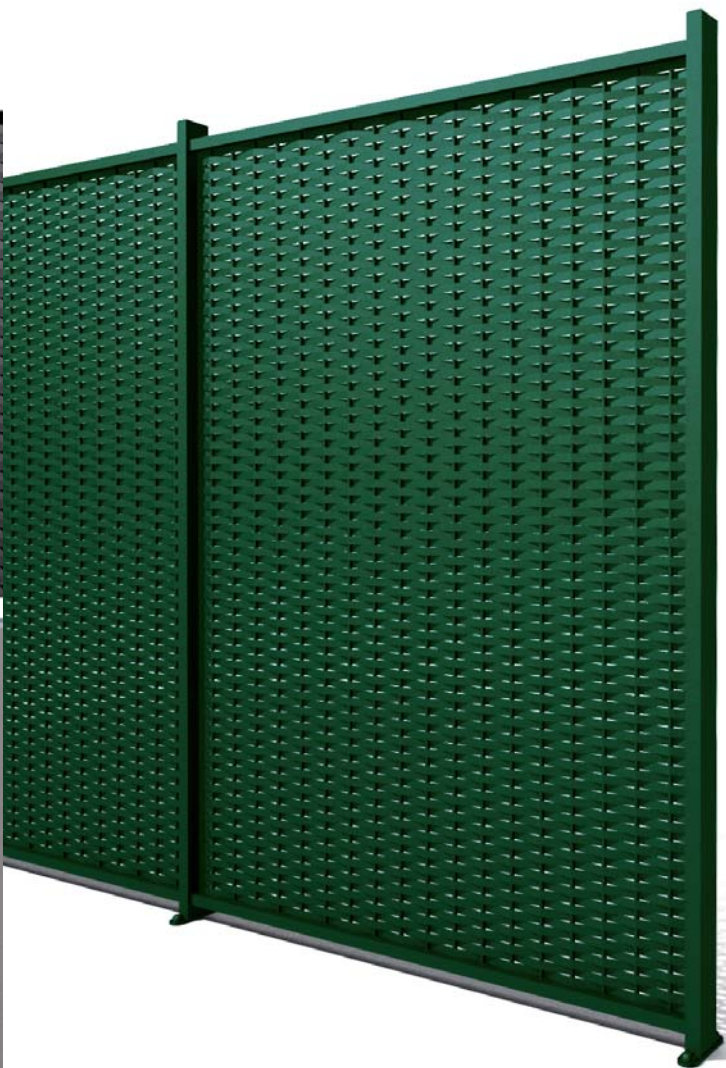
GALVANIZED IRON POSTS**Stitch and junction****Wall anchorages****Inside corner****Outside corner****GALVANIZED IRON ANCHORAGES****Screws**

Standardized screws protected
with security rivets.

Rivets

Security elements to conceal the screws
and provide antivandalistic protection.

Chemical plug**Metallic plug****Receive**



ALUMINIUM POSTS

Stitch and junction



Corner



Aluminium surface protection

Phosphatising and degreasing treatment.
Oven baked lacquering with polyester.

ALUMINIUM ANCHORAGES

Chemical plug



Metallic plug



Receive

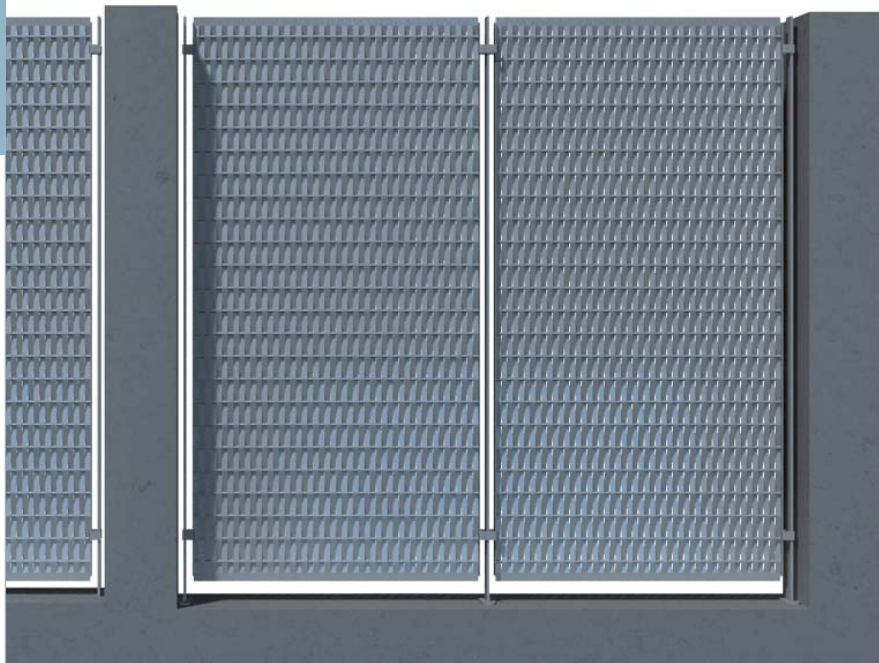


Screws

Standardized screws protected
with security rivets.

Rivets

Security elements to conceal the screws
and provide antivandalistic protection.

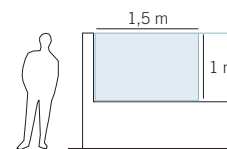


VERTIAL WEAVE

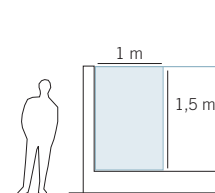


PANEL STANDARD FORMATS

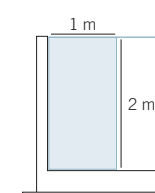
Ref.: MTR-V100



Ref.: MTR-V150



Ref.: MTR-V200



· Other **formats**, **bending** and **installation** positions, ask.

POSTS

1. Galvanized iron

- Stitch
- Junction
- Wall anchorages
- Corners

2. Aluminium

- Stitch, junction and corners

ANCHORAGES

1. Chemical plug

2. Metallic plug

3. Receive

*More information about the Characteristics of the system (page 20)



Biblioteca Pública del Estado (Zamora). Ref. MTR-V200-A



Supermercado PAM (Poggio a Caiano). Italia. Ref. MTR-V200



GALVANIZED IRON POSTS



Steel surface protection

Surface protection.

Duplex system according to the norm UNE-En 134383.

Hot galvanizing >70 µm thick.

Norm UNE-EN ISO 1461.

Acid degreasing, amorphous phosphatising

Oven baked polyester lacquering >70 µm thick. High quality.

Stretch

MICROTRENZADA® aluminium sheet alloy 30-H111, thickness 1.5 mm.
Alloy aluminium rods 6063 T5, ø12 mm.

Aluminium surface protection

Phosphatising and degreasing treatment.
Oven baked lacquering with polyester.

GALVANIZED IRON ANCHORAGES

Chemical plug



Metallic plug



Receive



Screws

Standardized screws protected
with security rivets.

Rivets

Security elements to conceal the screws
and provide antivandalistic protection.



ALUMINIUM POSTS

Stitch, junction and corner



Stretch

MICROTRENZADA® aluminium sheet alloy 30-H111, thickness 1.5 mm.
Alloy aluminium rods 6063 T5, \varnothing 12 mm.

Aluminium surface protection

Phosphatising and degreasing treatment.
Oven baked lacquering with polyester.

ALUMINIUM ANCHORAGES

Chemical plug

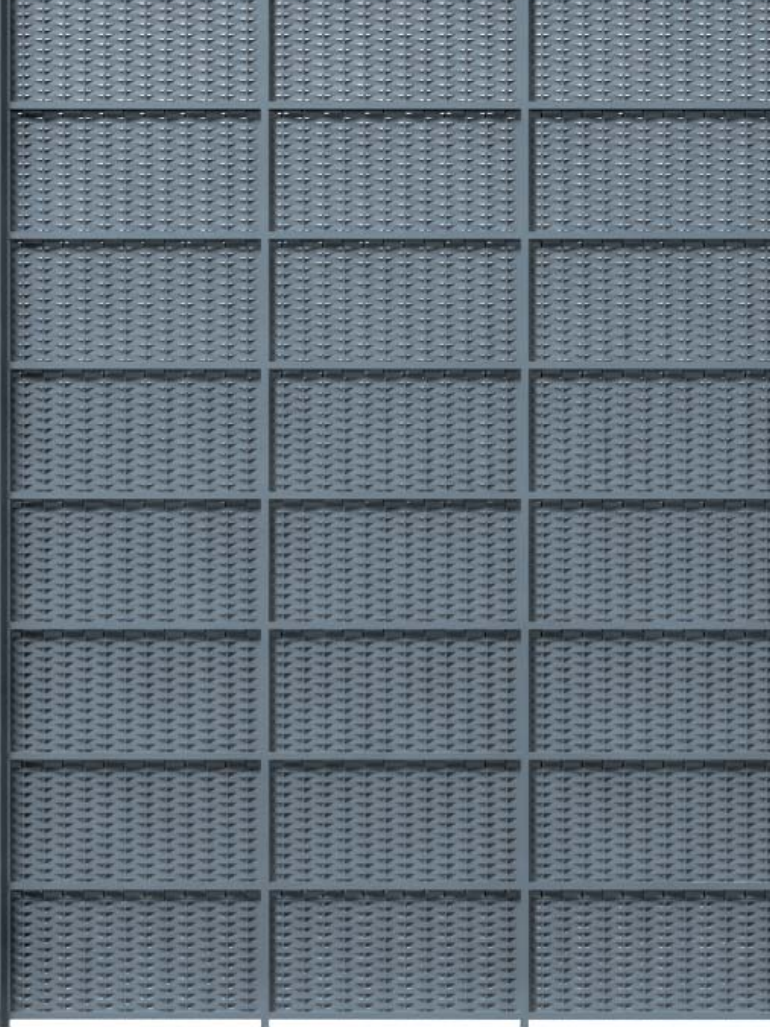


Metallic plug



Receive





HORIZONTAL WEAVE



FORMATS

*The format of the panels will change depending on the project.

POSTS

1. Aluminium

- Stitch and junction

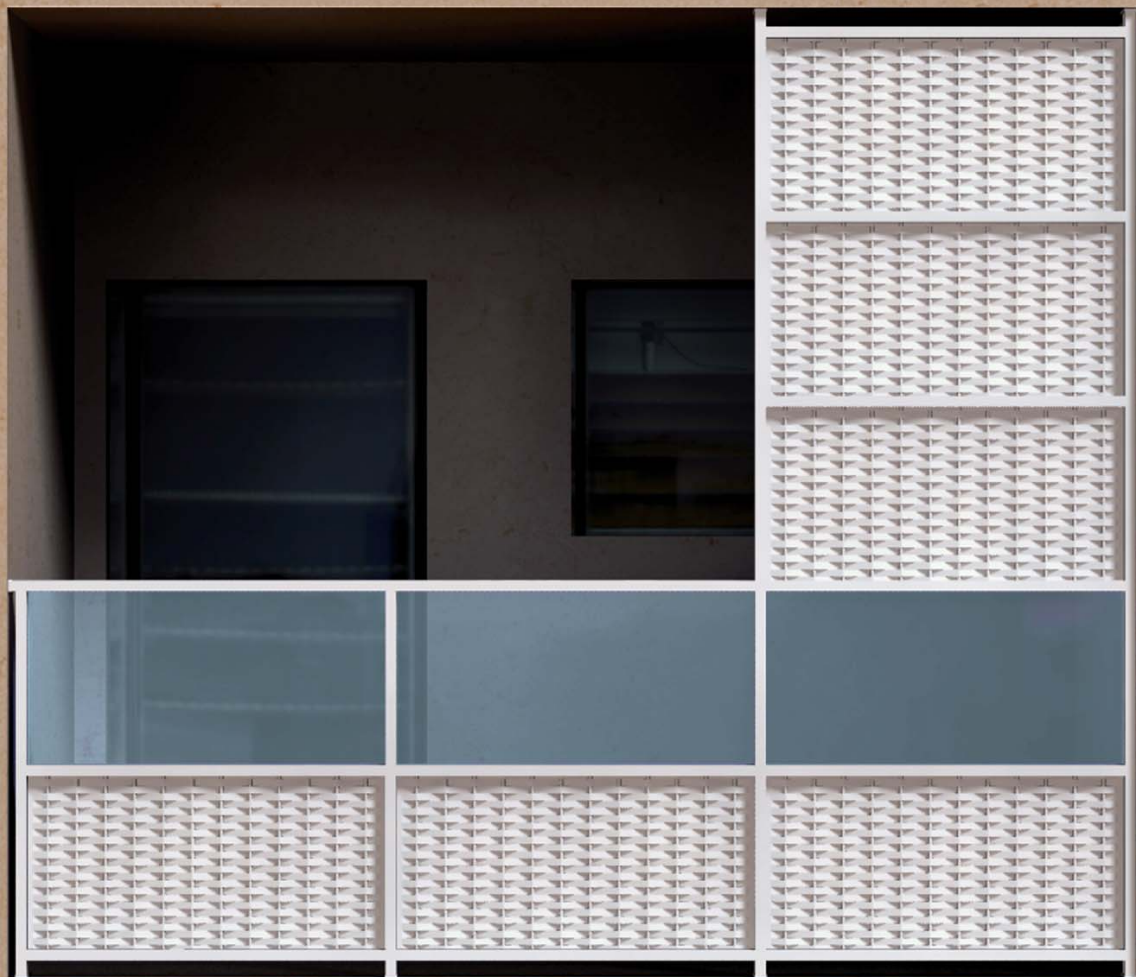
ANCHORAGES

1. Chemical plug

2. Metallic plug

3. Receive

*More information about the Characteristics of the system (page 26)





Vivienda Unifamiliar. Toledo.

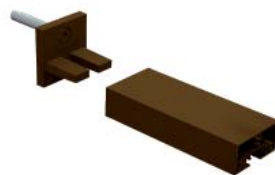


Vivienda Unifamiliar. Toledo.

HANDRAILS AND WALL ANCHORAGES

Continuous top aluminium handrail with a 60x30 mm section and 1.5 mm thickness useful as a rail for the panel.

To provide a perfect resistance, the handrail has to be anchored on the wall.



Stretch

MICROTRENZADA® aluminium sheet alloy 30-H111, thickness 1.5 mm. Alloy aluminium rods 6063 T5, ø12 mm.

Aluminium surface protection

Phosphatising and degreasing treatment. Oven baked lacquering with polyester.

ALUMINIUM POSTS

Stitch and junction



ALUMINIUM ANCHORAGES

Chemical plug



Metallic plug



Receive

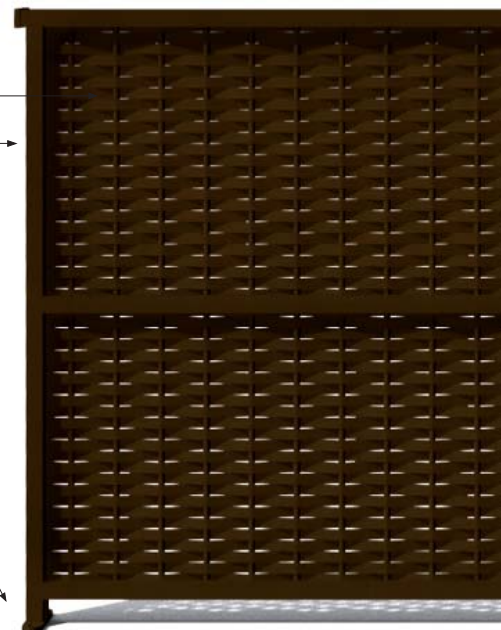


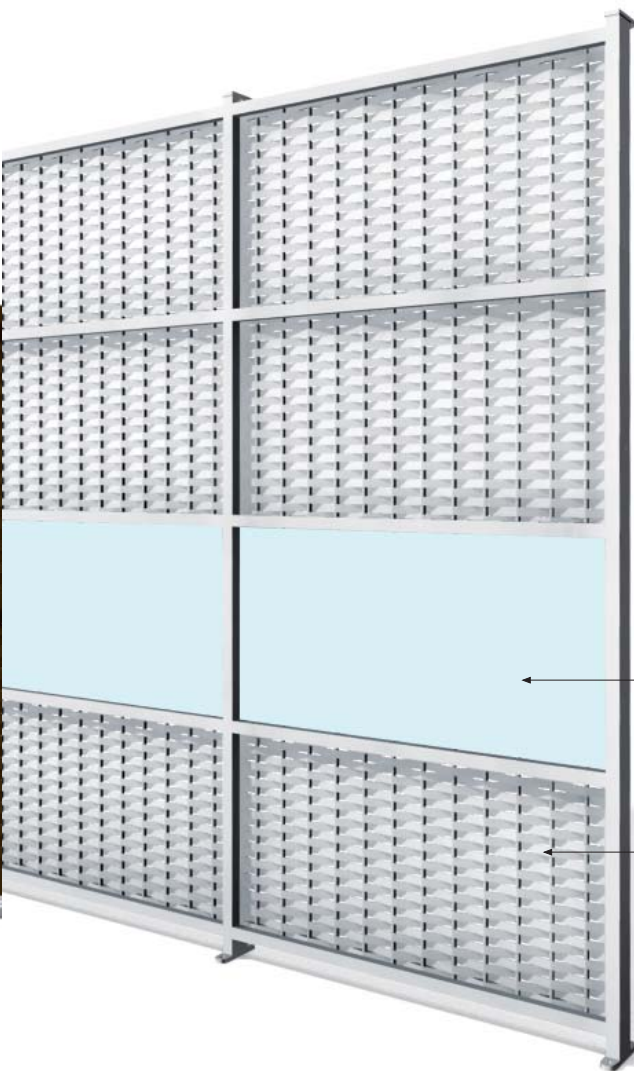
Screws

Standardized screws protected with security rivets.

Rivets

Security elements to conceal the screws and provide antivandalistic protection.





ALUMINIUM POSTS AND CEILING ANCHORAGE

A modular system that makes it possible to fix the panels using screwed reeds.
To provide a perfect resistance, the posts have to be anchored on the wall and the ceiling.



Other materials

This system makes it possible to combine the MICROTRENZADA® sheet panels with other materials like glass or phenolic panel (not provided by Trenza Metal Área).

Stretch

MICROTRENZADA® aluminium sheet alloy 30-H111, thickness 1.5 mm.
Alloy aluminium rods 6063 T5, $\varnothing 12$ mm.

Aluminium surface protection

Phosphatising and degreasing treatment.
Oven baked lacquering with polyester.

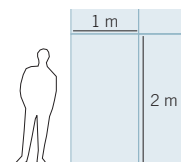


VERTICAL WEAVE



PANEL STANDARD FORMATS

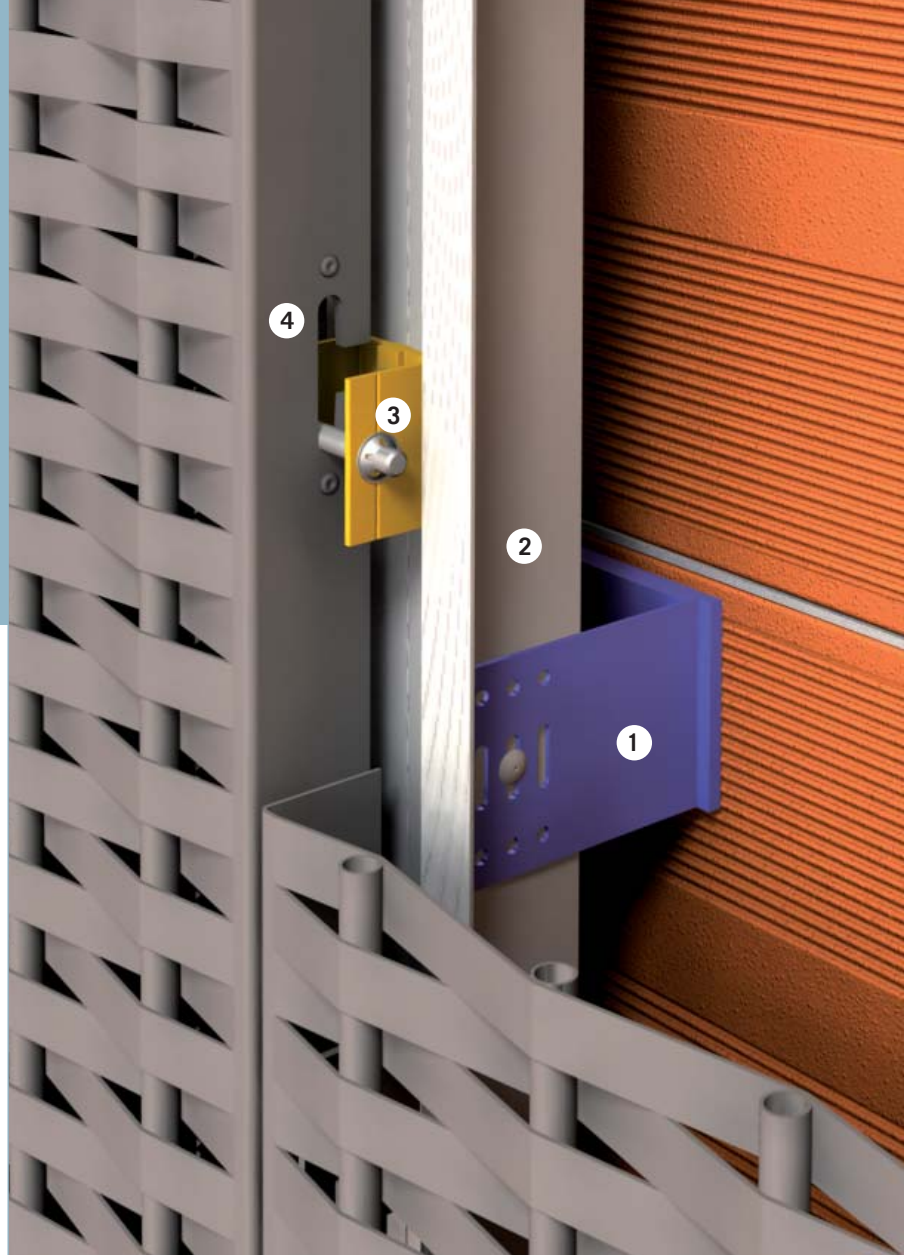
Ref.: MTR-FV100/200



2nd SKIN FAÇADE SYSTEM MICROTRENZADA® for new buildings and restorations

- Battens fixing on the wall using stainless **buttress with two-dimensional tolerance** (1).
- Distancia entre rastreles de **1m**.
- **Aluminium profiles, stainless steel accessories and screws**.
- **Panel fixing on the batten using stainless steel screws** (2).
- Chance of dismantling panels individually.
- **Battens cover fixed with inviolable screws** (3).



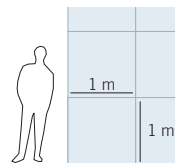


HORIZONTAL WEAVE



PANEL STANDARD FORMATS

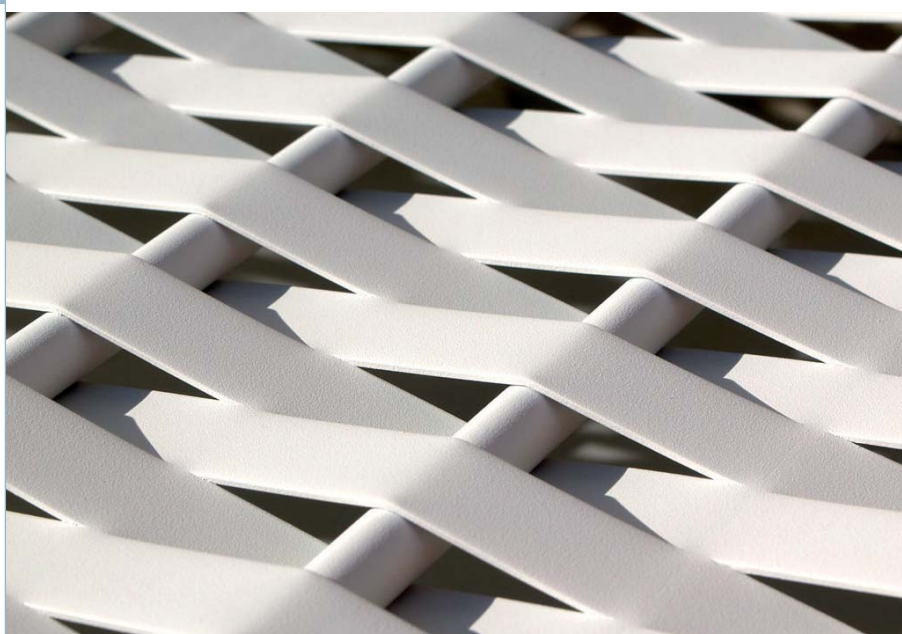
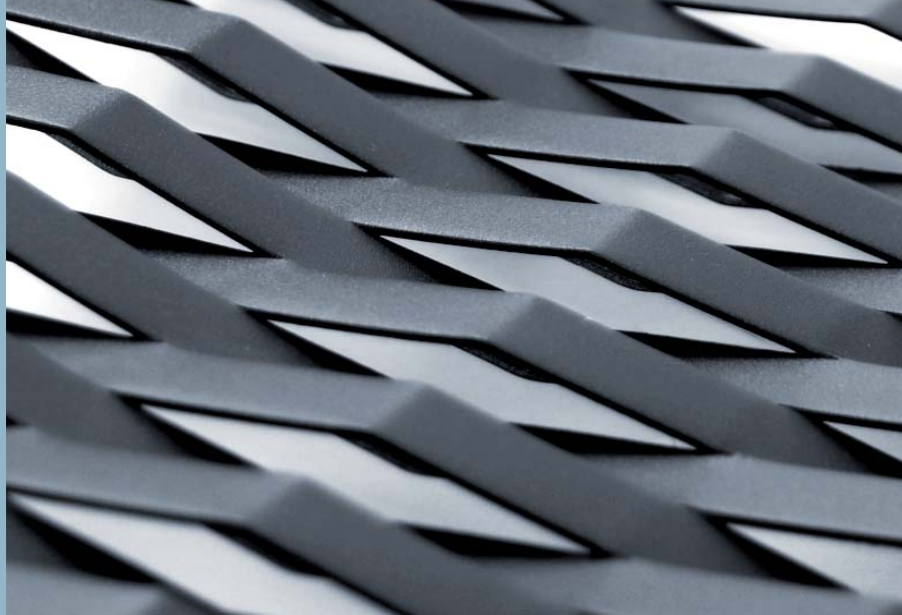
Ref.: MTR-FH100/100



2nd SKIN MICROTRENZADA® FAÇADES FOR CASSETTE new buildings and restorations

- Direct assembly on the batten.
- Compatible with rail systems like Alucobond®, Reynobond® or others existing at the market.
- The set is fixed on the wall using a **support with a metallic plug (1)**.
- **Extrusion continuous rail (2)**.
- Adjustable **bolt support (3)**.
- **MICROTRENZADA® sheet with special die-cuttings for the system (4)**.
- The sheets have to be **multiples of 160 mm**.





MODELS

MICROTRENZADA® aleación aluminium sheets alloy 30 H-111, thickness 1.5 mm, with 2 cm side flanges for fixings and flaps. Aluminium rods alloy 6063 T5, \varnothing 12 mm.

Without rods
Ref.: MTO



With rods
Ref.: MTR

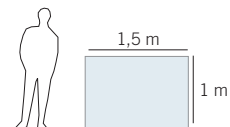


1,5 cm

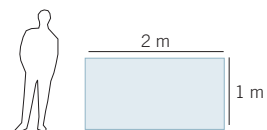


PANEL STANDARD FORMATSS

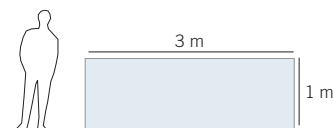
Ref.: MTO-150 / MTR-150



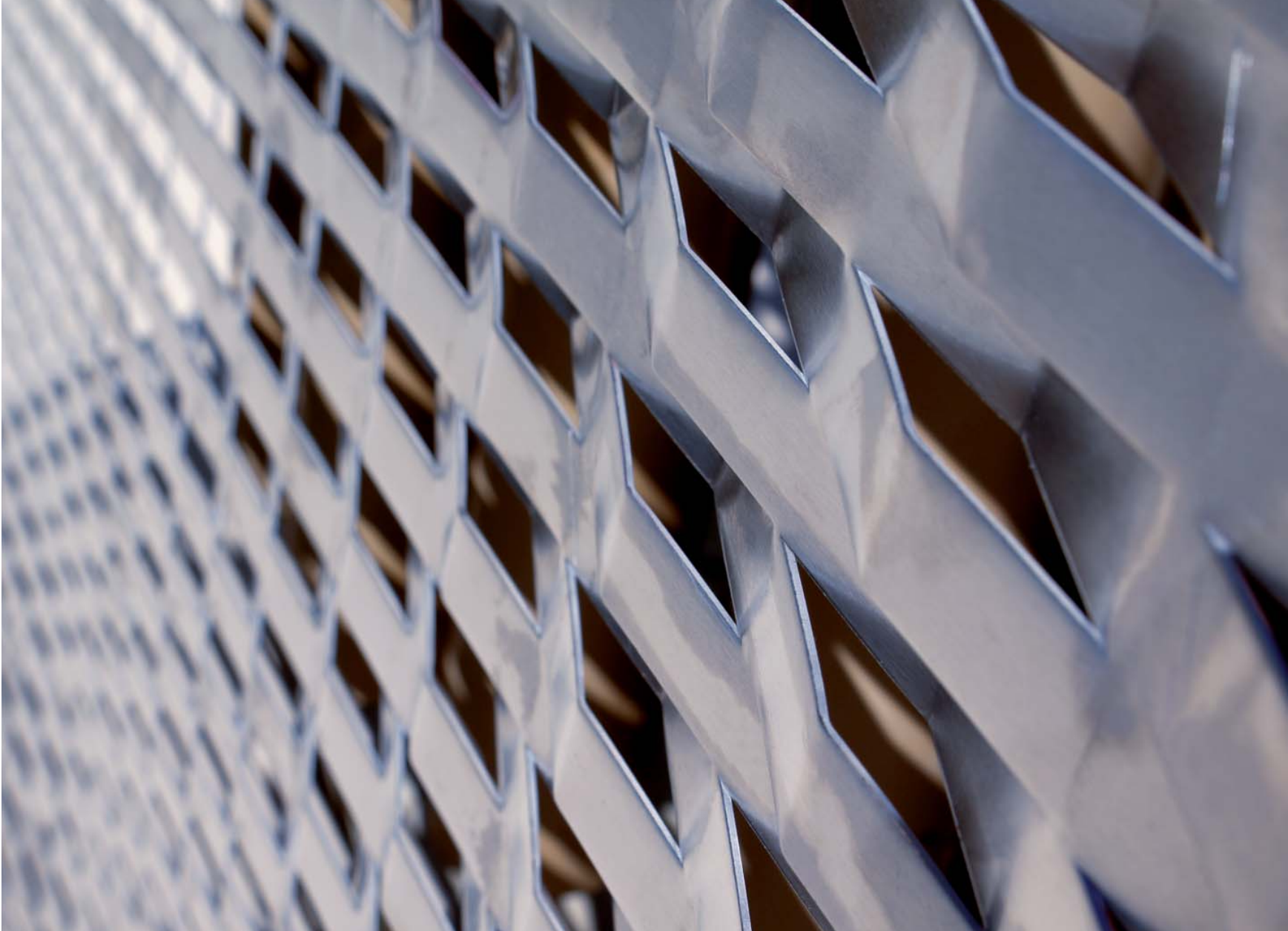
Ref.: MTO-200 / MTR-200



Ref.: MTO-300 / MTR-300



· Other **formats**, ask.





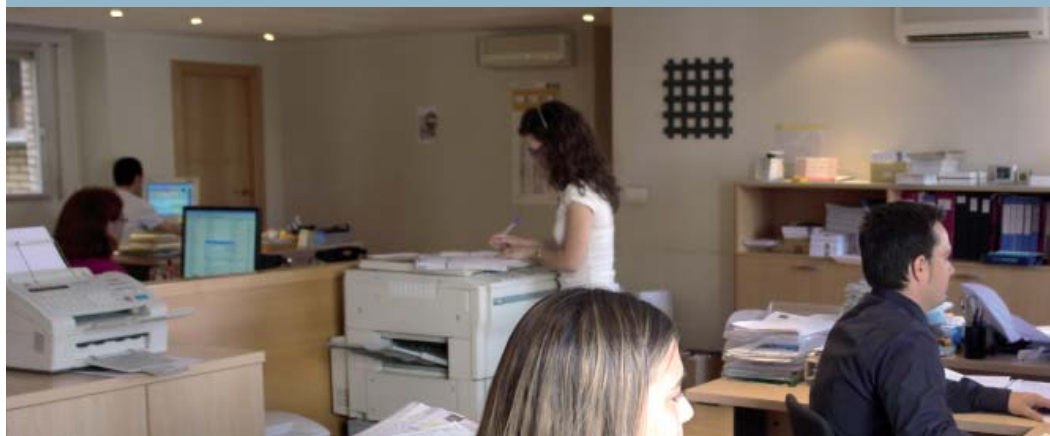
TRENZA METAL ÁREA

**Renders technical service to
architecture professionals**

Technical Management.

Precise information about our products in editable files to manage your project.

- DWG graphics
- 3D files
- Descriptive reports
- Valued units



Technical Department

Trenza Metal Área has a long experience in applying its products at the building works and offers its technical services for free to architects, engineers, construction companies, developers, locksmiths and local technicians. Many installations guarantee our company's growing prestige and the reliability of our products and systems.



Powder paint

Trenza Metal Área has an application line of oven baked powder paint with which the material to be covered receives a previous treatment before applying the electrostatic powder paint, what completes the process by using a polymerizing and a tanning.

Supply

Trenza Metal Área packs all its products meticulously and using the appropriate protections to transport the material with the highest guarantees.










TRENZA METAL ÁREA

Trenza Metal Area applies different treatments to offer multiples finishes

Outer finish à la carte.

High resistance and variety of finishes.

SILVER Cod. C21	FORGE BLACK Cod. C01	METALLIC GRAY Cod. C02	FERRITE Cod. C07	WHITE Cod. C05	GREEN Cod. C06	TILE RED Cod. C08
						

Finishes

- **Iron textured polyester** in six colours: Forge black, metallic gray, ferrite, white, green and tile red.
- **Smooth polyester** in silver.

*To choose the colour please ask for a real sample. Customer support (+34) 902 114 142

Treatment of the steel

Hot galvanizing (1). Phosphatising and degreasing treatment (2). Oven baked lacquering with polyester (3).



Treatment of the aluminium

Phosphatising and degreasing treatment (2). Oven baked lacquering with polyester (3).



Further finishes

- **Raw** (only for panels).
- **Transparent lacquering.**
- **Printed and oven tanned on powder lacquering.** Printed on one or on both sides. It is possible to print any design requested by the customer.

ZIGMETAL

Product line for architecture, town planning and gardening



NATURAL FABER

Street furniture line



TRENZA METAL

Applications for architecture and town planning



TUB METAL

nex® tabular aluminium protections for buildings and town planning

numen® modular aluminium protections for architecture



OTHERS

Elements adapted to the Accessibility Norms

GeoSilex® aplicaciones en ambientes productivos de CO₂
Servicios Auxiliares del Metal



TRENZA METAL AREA- UNIQUE PROJECTS

Trenza Metal Área researches constantly into new materials and techniques of manufacture to develop products and applications for architecture and urban design. Besides, Trenza Metal collaborates with architects, engineers and designers, producing exceptional projects in steel, aluminium, polyurethane and concrete.

Contact our technical department to consult the execution possibilities of your project.



TRENZA METAL ÁREA

Technical Office/ Customer Services

+34 902 114 142

www.microtrenzada.com

www.trenzametallarea.com

ESPAÑA

Trenza Metal Área
Polígono Industrial Valcabado
Ctra. N-630, Km. 272.
49024 Zamora
ESPAÑA
Tel.: (+34) 980 509 219
Fax: (+34) 980 530 692
info@trenzametallarea.com

Please request a CD with our
latest product range.



Unión Europea

Fondo Europeo
de Desarrollo Regional



TRENZA METAL

aluminium

